

太阳在30分钟内发送到地球的能量比全球人类一年消耗的还要多。如果地球上全部沙漠面积的1%用来建设电站，所发电量比全球目前化石燃料的发电量还要多。未来属于成功有效利用这些资源赚钱的人。投资光热就是投资未来。我们未来的能源供应基于对可再生能源的利用。因为，我们25年来一直致力于太阳能的商业应用，规划建设太阳能电站。太阳能电站为可持续和环境友好的能源生产做了宝贵的贡献。

In 30 minutes the sun sends more energy to the earth than humans consume in an entire year. With solar power plants more power can be generated on only 1% of the earth's deserts than fossil fuels produce globally today. The future belongs to whoever succeeds in using these reserves effectively and profitably. Investing here is investing in the market of the future. Our future energy supply must be based on the use of renewable energies. For over 30 years we have been focussing on the commercial use of solar energy and are planning and building solar thermal power plants. Solar power plants make a valuable contribution to a sustainable and climate-friendly generation of energy.

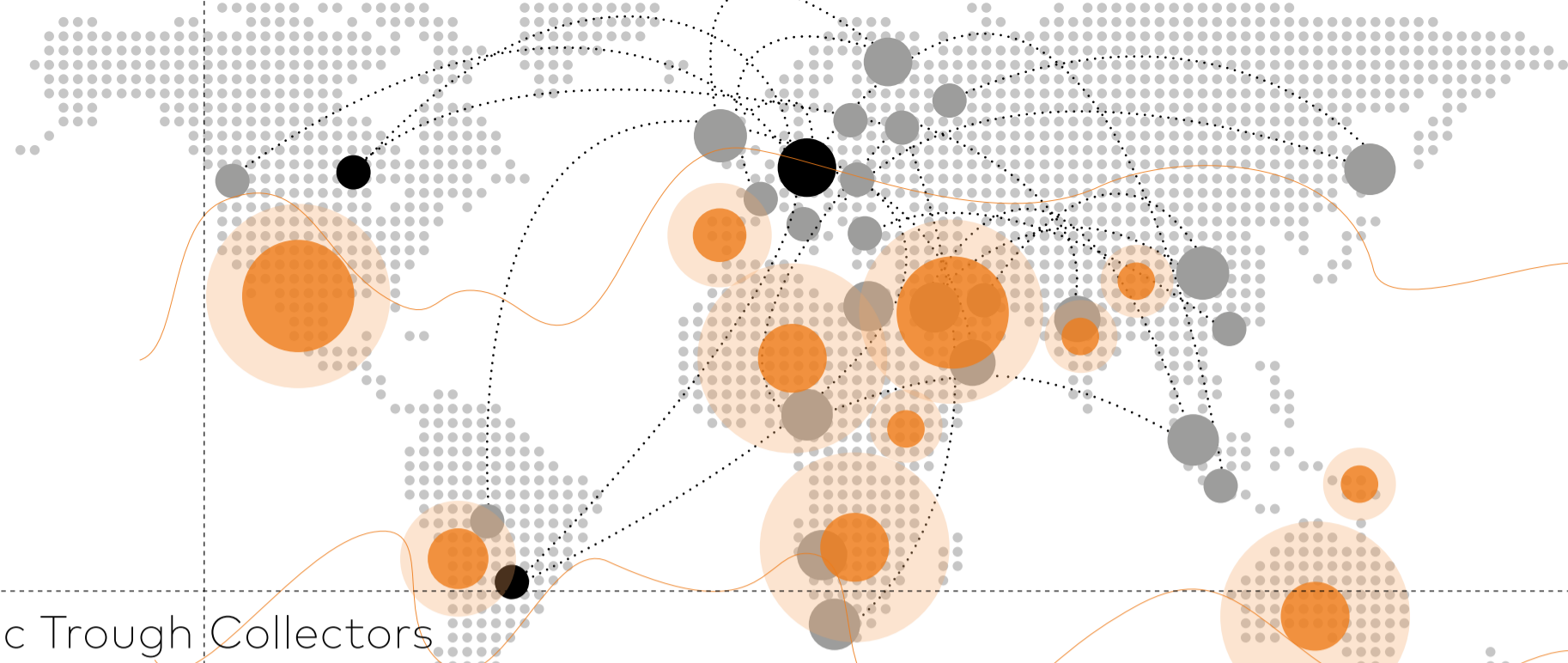
希莱仕伯格曼伙伴 schlaich bergemann partner

sbp sonne gmbh

Consulting Engineers
for Renewable Energy
可再生能源咨询工程师

Schwabstraße 43
70197 Stuttgart (Germany)
Phone +49 711 6 48 71-0
solarinfo@sbp.de
www.sbp.de

可再生能源 Renewable Energy



西班牙安达索 1-3, 3*50 MW 带储能槽式电站
Parabolic trough power plants Andasol 1-3, 3 x 50 MW with storage

终极槽
UltimateTrough

欧槽抛物面槽式电站 50兆瓦储能 青海, 德令哈, 中国 EuroTrough parabolic trough power plant 50 MW with storage Qinghai, Delingha, China

槽式集热器支架 Parabolic Trough Collectors



巨断式定日镜, 48 m²
Stellio heliostat, 48 m²

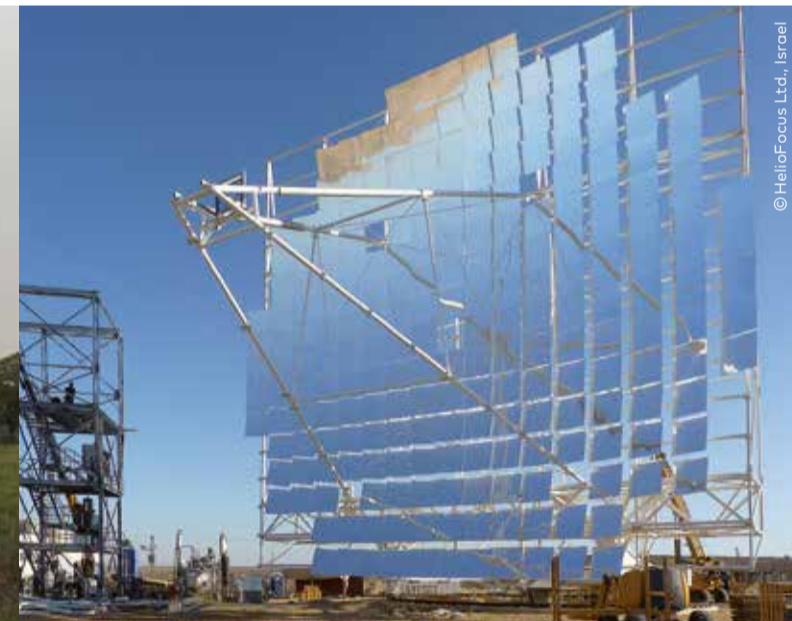
先进的膜吸定日镜 ASM 150, 150 m² 的聚光面积
Advanced Stressed Membrane heliostat, 150 m² concentrator area

巨断式定日镜预批次系列产品 测试平台, 尤利希, 德国
Stellio Preseries Test Platform, Jülich, Germany

以色列 HeliocFocus 迪蒙娜 500 m² 菲涅尔碟式
500 m² Fresnel Dish, HeliocFocus, Dimona, Israel

为西班牙 Infinia 公司设计的位于 Villarobledo 的 3 kW 碟式斯特林碟盘
3 kW Dish Stirling Infinia Corp., Villarobledo, Spain

聚焦太阳 Focusing the Sun



太阳能烟囱 200MW (艺术效果)
Solar Updraft Tower 200MW (artist's impression)

更多技术 Further Technologies

巴西里约热内卢的马拉卡纳球场一体化光伏
Maracanã-Stadium (Estádio Jornalista Mário Filho), Rio de Janeiro, Brazil
Integrated photovoltaics



我们的服务范围从概念设计到发电
- 为客户和业主提供咨询 (拦截因子和能流密度分析)
- 可行性研究
- 结构概念设计, 计算, 优化
- 光学评估和优化
- 控制和驱动概念和计算
- 原型机策划和系列生产
- 项目管理
- 集热器支架研发/集热场设计
- 塔式电站概念设计 (塔, 定日镜, 光场布置)
- sbp sonne gmbh 太阳能是欧槽, 终极槽以及巨断式定日镜的技术提供方和许可方

Our scope of work from the concept to power generation
- Consultancy for client and owner
- Feasibility studies
- Structural concept, calculation and optimization
- Optics evaluation and optimization (Intercept factor and flux density distribution)
- Concept and calculation of controls and drives
- Planning of prototype and series production
- Project Management
- Solar collector development / Solar field engineering
- Solar tower power plant concepts (tower, heliostats, heliostat field layout)
- sbp sonne gmbh is technology provider and licensor for the EuroTrough, UltimateTrough and member of the Stellio consortium for turn key heliostat solar fields

获得奖项
- 2018 CSPPLAZA 全球化贡献大奖
- 2017 CSPPLAZA 巨断式定日镜技术创新研发大奖
- 2016 CSP today sbpRAY软件开发工程性能大奖
- 2016 CSP today 年度人物大奖
- 2015 年国际太阳能大会技术创新奖: 斯德联合体共同开发的断膜定日镜
- 2013 年国际太阳能大会技术创新奖: sbp sonne gmbh和 Flabeg 共同开发的终极槽UT
- 2013 聚光太阳能设计性能奖
- 2010 年国际太阳能大会技术创新奖
- 2010 CSP Today 日光槽创新大奖
- 加州终极槽试验回路获得 Finsterwalder 奖

- 2018 CSPPLAZA Globalisation Contribution Award
- 2017 CSPPLAZA technology innovation Award for the development of the Stellio heliostat
- 2016 CSP today engineering performance Award for the development of sbpRAY
- 2016 CSP today personality of the year Award
- 2015 SolarPACES Technology Innovation Award: Stellio Consortium for the development of the Stellio heliostat
- 2013 SolarPACES Technology Innovation Award: sbp sonne gmbh and Flabeg for the UltimateTrough
- 2013 CSP today engineering performance Award
- 2010 SolarPACES Award
- 2010 CSP Today Innovation Award for Heliotrough
- Finsterwalder Award for UltimateTrough test loop in California

sbp

schlaich
bergemann partner
希莱仕伯格曼伙伴
Consulting Engineers
for Renewable Energy
可再生能源咨询工程师

Schwabstraße 43
70197 Stuttgart (Germany)
Phone +49 711 6 48 71-0

太阳能的未来 Solar Future



sbp

**schlach
bergemann partner**
希莱仕伯格曼伙伴

Consulting Engineers
for Renewable Energy
可再生能源咨询工程师

Schwabstraße 43
70197 Stuttgart
Phone +49 7 11 6 48 71-0
solarinfo@sbp.de

Brunnenstraße 110c
13355 Berlin
Phone +49 30 8 14 52 83-0
berlin@sbp.de

555 8th Avenue, Suite 2402
New York, NY 10018
Phone +1 212 255 3682
newyork@sbp.de

Rua Afonso Braz 473 cjs.113-114
CEP 04511-011 São Paulo
Phone +55 11 2691 0874
saopaulo@sbp.de

1325 Huaihai Road, Room 2101
Shanghai 200031
Phone +86 21 5423 1251
shanghai@sbp.de

3, rue d'Alexandrie
75002 Paris
Telefon +33 9 67 65 48 93
paris@sbp.de

www.sbp.de

www.moveables.sbp.de

欢迎浏览我们的网页，有更多有趣的槽式技术以及我们现有集热器研发终极槽 (UT) 的真知灼见
A glance at our moveables website shows more interesting insights into parabolic trough
technology and into our current collector development, the UltimateTrough.